

SUPER FAST-CLEAN



Code-nozzle angle	Ø inch	Ø mm	Product type	Filter recom.
SFC07-20	0,007"	0,18	Clear coats and pigmented enamels for	Red 200 M
SFC07-40				
SFC09-20	0,009"	0,23		
SFC09-40			Paints nitro, synthetic and polyurethane	Yellow 100 M
SFC11-20	0,011"	0,28		
SFC11-40			Antirust	
SFC13-20	0,013"	0,33		
SFC13-40				
SFC13-60				
SFC15-20	0,015"	0,38		
SFC15-40				
SFC15-60				
SFC17-20	0,017"	0,43		
SFC17-40				
SFC17-60				
SFC19-20	0,019"	0,48	Funds zinc inorganic paints	White 60 M
SFC19-40				
SFC19-60				
SFC21-20	0,021"	0,53		
SFC21-40				
SFC21-60				
SFC23-20	0,023"	0,58		
SFC23-40				
SFC23-60			Thixotropic, stucco spray high solids paints hill paints fillers	
SFC25-20	0,025"	0,63		
SFC25-40				
SFC25-60				
SFC27-20	0,027"	0,68		
SFC27-40				
SFC27-60				
SFC27-80				
SFC29-20	0,029"	0,74		
SFC29-40				
SFC29-60				
SFC29-80				
SFC31-40	0,031"	0,79		
SFC31-60				
SFC31-80				
SFC33-40	0,033"	0,83		
SFC33-60				
SFC33-80				
SFC35-40	0,035"	0,89		
SFC37-40	0,037"	0,94		
SFC39-40	0,039"	1,00		
SFC39-60				
SFC39-80				
SFC41-40	0,041"	1,05		
SFC43-40	0,043"	1,10		Green 30 M
SFC43-60				
SFC43-80				
SFC45-60	0,045"	0,15		
SFC47-60	0,47"	1,20		
SFC51-60	0,051"	1,30		
SFC51-80				

- Compatible with all Airless guns
- Rapid replacement of working nozzle
- Rapid safe cleaning
- Maximum working pressure 350 bar (5075 psi)
- Long lasting carbon-tungsten insert
- Excellent finish



- NEVER place your hands or fingers in front of the nozzle
- NEVER point the gun at yourself or anyone else
- Discharge the pressure in the gun and use the appropriate safety precautions when the operator is not working
- DO NOT cut or tamper with the safety mechanisms on the device.

LARIUS[®]
Transfer - Extrusion - Injection pumps - Paint spraying equipment
PAINT SPRAYING EQUIPMENT
www.larius.eu



L91X AIRLESS GUN

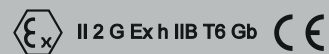
M16x1,5

Cod. 11130

Professional gun at high pressure

1/4"

Cod. 11131



With device-Clean Super Fast

Ed. 002 | 01-17

MANUFACTURER:

LARIUS[®]

Transfer - Extrusion - Injection pumps - Paint spraying equipment
23801 CALOLZIOCORTE - LECCO - ITALY - Via Antonio Stoppani, 21
Tel. (39) 0341/62.11.52 - Fax (39) 0341/62.12.43
E-mail: larius@larius.com - Internet http://www.larius.eu



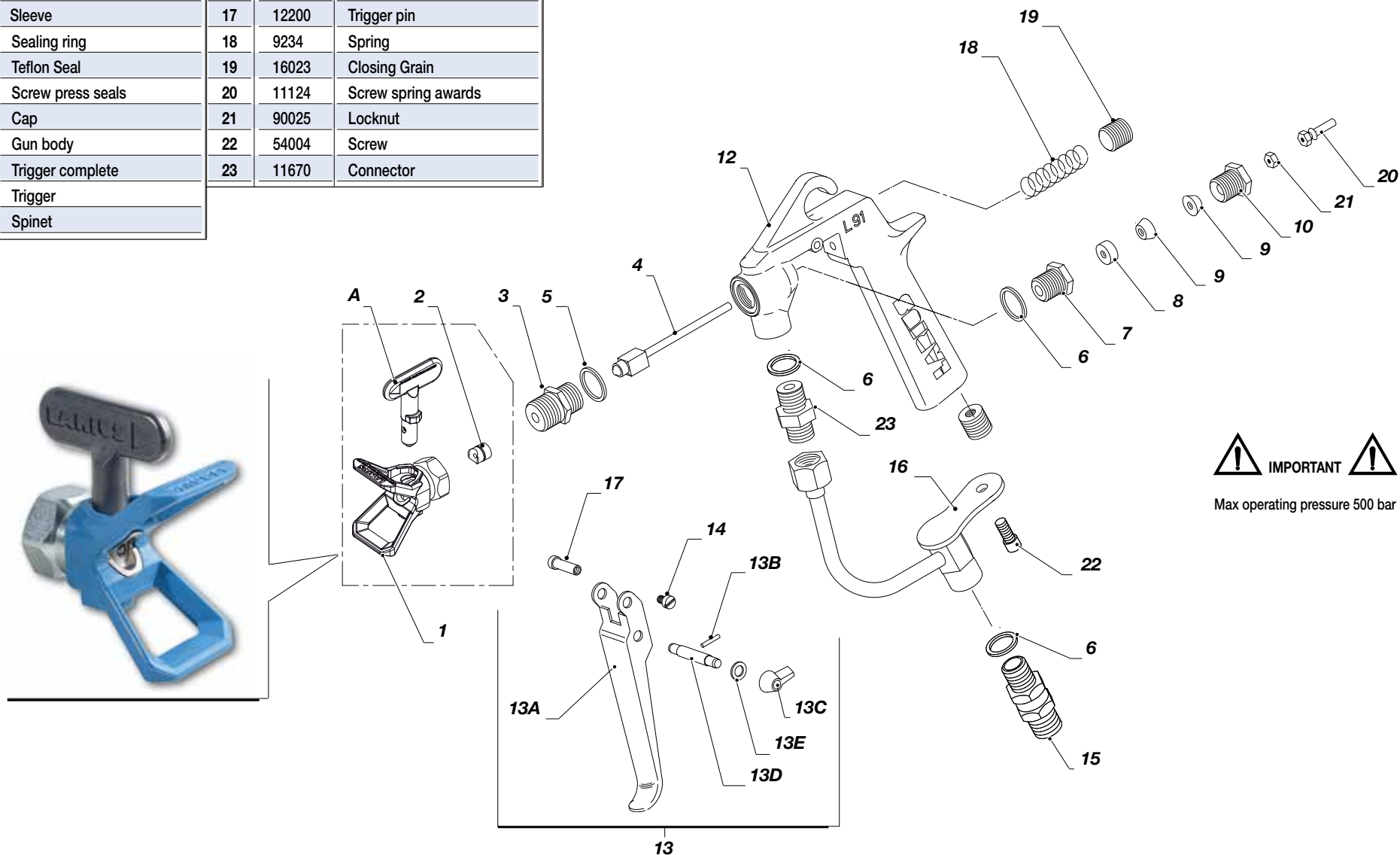
CUSTOMERS TECHNICAL SERVICE

Tel. (39) 0341/621256

L91X AIRLESS GUN

at high pressure

Pos.	Code	Description	Pos.	Code	Description
A	See table*	Nozzle Super Fast Clean	13C	11010	Lever
1	18270	Body Super Fast Clean	13D	11667	Pin
2	18280	Gasket Super Fast Clean	13E	11011	Washer
3	11004	Sleeve	14	12101	Screw
4	11126	Prick punch complete	15	11015	Swivel connector M16x1,5
5	11611	Washer		10155	Swivel connector 1/4" GAS
6	32010	Washer	16	11609	Tube material
7	11122	Sleeve	17	12200	Trigger pin
8	11712	Sealing ring	18	9234	Spring
9	11114	Teflon Seal	19	16023	Closing Grain
10	11123	Screw press seals	20	11124	Screw spring awards
11	11677	Cap	21	90025	Locknut
12	11121	Gun body	22	54004	Screw
13	11640	Trigger complete	23	11670	Connector
13A	11661	Trigger			
13B	11668	Spinet			



IMPORTANT



Max operating pressure 500 bar