

SUPER FAST-CLEAN



PISTON GUNSTOCK FILTERS

- Code 11039: Green (30M)
- Code 11038: White (60M)
- Code 11037: Yellow (100M)
- Code 11019: Red (200M)



Code-nozzle angle	Ø inch	Ø mm	Product type	Filter recom.
SFC07-20	0,007"	0,18	Transp. and pigmented paints,	Red 200 M
SFC07-40			thin enamels	
SFC09-20	0,009"	0,23		
SFC09-40				
SFC11-20	0,011"	0,28	Nitro, synthetic and polyurethane paints	Yellow 100 M
SFC11-40				
SFC13-20	0,013"	0,33		
SFC13-40				
SFC13-60				
SFC15-20	0,015"	0,38	Antirust	
SFC15-40				
SFC15-60				
SFC17-20	0,017"	0,43		
SFC17-40				
SFC17-60				
SFC19-20	0,019"	0,48	Primers, zinc inorganic, water paints	White 60 M
SFC19-40				
SFC19-60				
SFC21-20	0,021"	0,53		
SFC21-40				
SFC21-60				
SFC23-20	0,023"	0,58		
SFC23-40				
SFC23-60				
SFC25-20	0,025"	0,63	Thixotropic, stucco spray, high solid, paints with glue, fillers	
SFC25-40				
SFC25-60				
SFC27-20	0,027"	0,68		
SFC27-40				
SFC27-60				
SFC27-80				
SFC29-20	0,029"	0,74		
SFC29-40				
SFC29-60				
SFC29-80				
SFC31-40	0,031"	0,79		
SFC31-60				
SFC31-80				
SFC33-40	0,033"	0,83		
SFC33-60				
SFC33-80				
SFC35-40	0,035"	0,89		
SFC37-40	0,037"	0,94		
SFC39-40	0,039"	1,00		
SFC39-60				
SFC39-80				
SFC41-40	0,041"	1,05		Green 30 M
SFC43-40	0,043"	1,10		
SFC43-60				
SFC43-80				
SFC45-60	0,045"	0,15		
SFC47-60	0,47"	1,20		
SFC51-60	0,051"	1,30		
SFC51-80				

- Compatible with all Airless guns
- Rapid replacement of working nozzle
- Rapid safe cleaning
- Maximum working pressure 350 bar (5075 psi)
- Long lasting carbon-tungsten insert
- Excellent finish

LARIUS®

SAMOA Group

www.larius.com

AT250 AIRLESS GUN

M16x1,5

Code 11200

Professional gun at high pressure

1/4"

Cod. 11250

II 2 G Ex h IIB T6 Gb CE



LARIUS®

SAMOA Group

LARIUS srl

Via Antonio Stoppani 21 - 23801 Calolziocorte (LC) ITALY
TEL. +39 0341 621152 - Fax +39 0341 621243 - larius@larius.com

www.larius.com



With device-Clean Super Fast

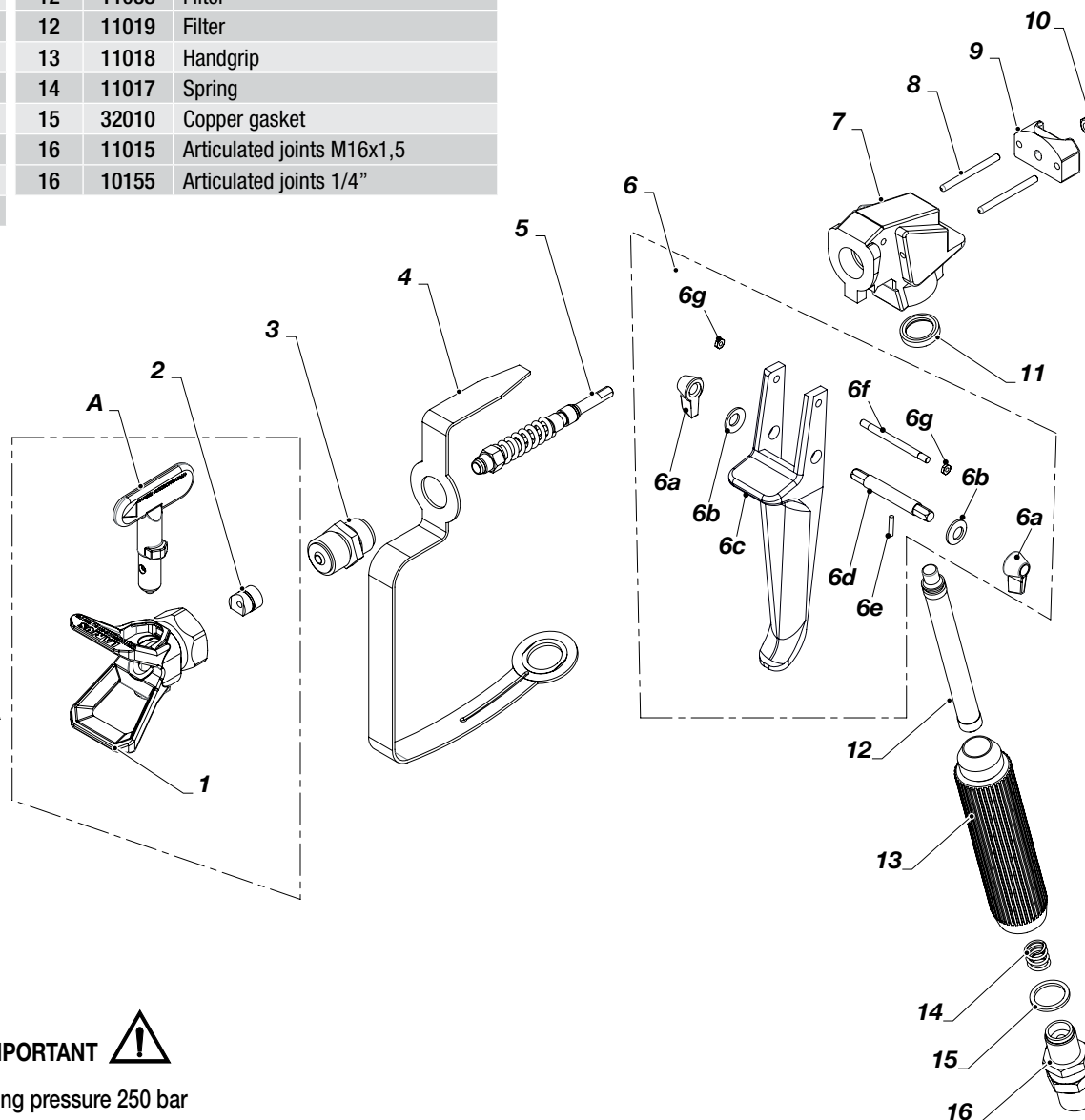
Ed. 010 - 11/2019



AT250 AIRLESS GUN

at high pressure

Pos.	Code	Description	Pos.	Code	Description
A	See table*	Nozzle Super Fast Clean	7	11206	Gun body
1	18270	Body Super Fast Clean	8	11207	Spinet
2	18280	Gasket Super Fast Clean	9	11208	Plate
3	11004	Sleeve	10	11209	Self-locking nut M5
4	11006	Safety for hand	11	11020	Gasket
5	11203	Complete linkage	12	11037	Filter
6	11008	Trigger gun	12	11038	Filter
6a	11010	Safety lever	12	11019	Filter
6b	11011	Brake washer	13	11018	Handgrip
6c	11014	Trigger	14	11017	Spring
6d	11012	Pin	15	32010	Copper gasket
6e	11013	Pin	16	11015	Articulated joints M16x1,5
6f	11034	Pin	16	10155	Articulated joints 1/4"
6g	11027	Nut M3			



- NEVER place your hands or fingers in front of the nozzle
- NEVER point the gun at yourself or anyone else
- Discharge the pressure in the gun and use the appropriate safety precautions when the operator is not working
- DO NOT cut or tamper with the safety mechanisms on the device.

Gun Filter: for coarsely pigmented or high viscosity materials, we recommend the use of a nozzle of min. 0.018" diameter and a 50 Mesh filter. For fine, thin-flowing materials, use a filter of 200 Mesh. Filters can be best cleaned with a brush dipped in solvent. Never poke it with a sharp instrument.

Filter cleaning: Unscrew the handle from the gun housing (if necessary, use gun spanner and pull out the filter completely). Insert the new filter as indicated in the drawing.



Max operating pressure 250 bar